



INDUSTRIES(Pty)Ltd

33 Industry Road / PO Box 1200
Clayville Ext 4
Olifantsfontein, RSA, 1665

Tel : +27 (0) 11 316 4161
Fax : +27 (0) 11 316 4786

Contact Person : Graham Preston
Cell : 082 457 5613



MK I



CASH IN TRANSIT WP 57



INTRODUCTION

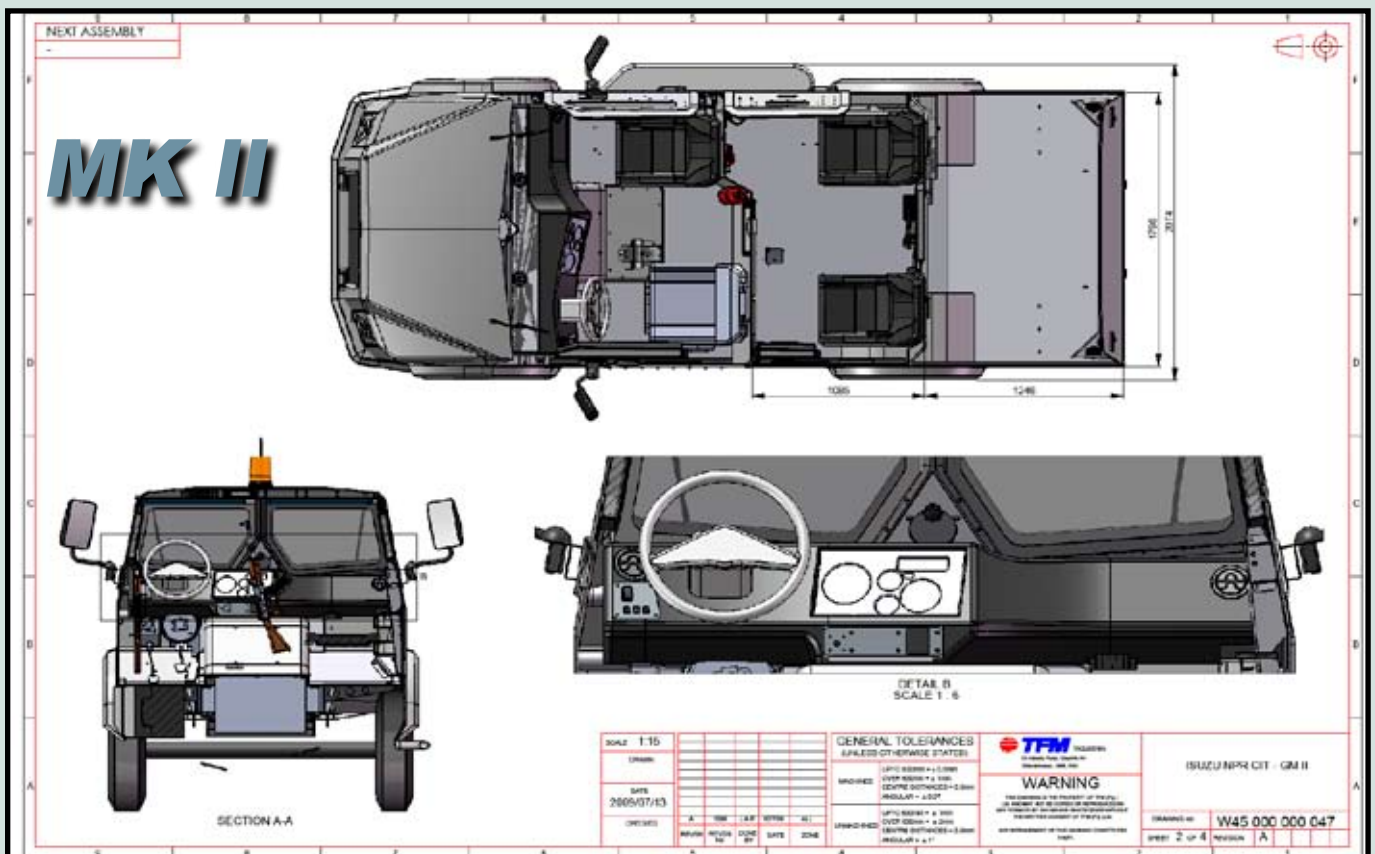
To meet the needs for the smaller cash-in-transit vehicle to handle small drop and retail operations, TFM Industries (Pty) Ltd has developed the WP57 Cash-In-Transit variant. The unit is available in both B4+ and B6+ ballistic protection levels. This new versatile offering comes in a MKI and MKII variant to give functionality to most security company's operational functionality and can be mounted to a selection of other chassis variants.

The WP57 offers full engine protection as well as a ballistically proven front grill for radiator protection. Both left- and right hand drive options are available.

Additional variant offered with single door entry or rear door vault entrance. The TFM pneumatic interlocking system is offered standard, insuring that the vault only be opened after the outer door is locked. Full air conditioning is a standard feature on all models.

OPTIONAL EXTRAS:

- Interlocking
- Run Flat Bands
- Run Flat Inserts
- CCTV options
- Tracking System Interfaces
- Pudu Cash Protection System
- Driver's Bulk Head



WP57 TECHNICAL SPECIFICATIONS...

	ISUZU NPR 300	ISUZU NPR 400
ENGINE		
Type	Diesel Turbocharged & Intercooled	Diesel Turbocharged & Intercooled
Design	4 cylinder common rail	4 cylinder common rail
Displacement	5 193 cm ³	5 193 cm ³
Maximum power	110 kW @ 2600 rpm	110 kW @ 2600 rpm
Maximum torque	404 Nm @ 1500 rpm	404 Nm @ 1500 rpm
Fuel type	Diesel	Diesel
Cooling	Liquid, pump driver circulation	Liquid, pump driver circulation
MAIN TRANSMISSION		
Type	Isuzu Diesel MYY6S	Isuzu Diesel MYY6S
Number of gears	6/R	6/R
REAR AXLE		
Tare mass	2 920 kg	2 920 kg
Maximum load	6 000 kg	6 600 kg
FRONT AXLE		
Tare mass	2 080 kg	2 080 kg
Maximum load	3 100 kg	3 100 kg
STEERING BOX		
Type	Power assisted	Power assisted
BRAKES		
Front and rear	Disc & drum : Hydraulic Brake Boost	Disc & drum : Vacuum/Hydraulic
Parking brake	Mechanical	Mechanical
ABS	Standard	Standard
Auxiliary	Exhaust	Exhaust
SUSPENSION		
Type	Semi-elliptical	Semi-elliptical
Springs	Alloy tapered leaf spring	Alloy tapered leaf spring
Shock absorbers	Double action telescopic	Double action telescopic
WHEELS AND TYRES		
Rim size	6.0GS	6.0GS
Number of holes	5	5
Wheel size	7.50R16-12PR	7.50R16-12PR
Run Flats	Optional	Optional
WHEEL BASE		
Wheel base	2650 mm	2650 mm
Track width front	1 680 mm	1 680 mm
Track width rear	1 650 mm	1 650 mm
Turning circle	12.36 m	12.36 m
ELECTRICAL SYSTEM		
Battery	2 x 12V 60 Ah - 24V	2 x 12V 60 Ah - 24V
FUEL CAPACITY		
Tank	100 Litres	100 Litres

Note: Details and specifications are subject to change without prior notice.

